



ArtenaBI Deployment Guide





Table of Contents

Contents

Proprietary Information	3
Intended Audience	3
Revision History	3
Prerequisites.....	4
Additional Prerequisites	4
Architecture.....	5
Release Package	6
Installation	6
1. Database.....	6
2. ETL	6
2.1 The Configuration File	6
2.2 The ETL File	7
Appendix One: Artena BI Cubes Configuration	10
Database.....	10
Appendix Two: Artena BI Reporter Configuration	11
1. Accounts and Groups.....	11
1.1. Service Account	11
1.2. Reporter Security Group.....	11
2. Database	11
3. ETL	11
4. WAP – Web Server and PHP Setup.....	12
4.1 Unpacking the release	12
4.2 Assign file system privileges	12
4.3 Web Site Setup	13
4.3.b Apache 2.4 - Website Setup	14



Proprietary Information

This publication is copyright. Except as permitted by the Copyright Act, no part of it may in any form or by any electronic, mechanical, photocopying, recording or any other means be reproduced, stored in a retrieval system or be broadcast or transmitted without the prior permission of the publisher, Student Management Software Solutions Ltd (SMSS).

All information in this publication is subject to alteration without notice. Although we endeavour to provide accurate and timely information, we do not warrant its accuracy at the date it is received. SMSS owns the copyright to all information contained in this publication except where the information has been explicitly stated as being derived from other parties. Attribution to SMSS must be given to any information reproduced.

Intended Audience

SMSS Client IT staff who are responsible for the deployment of Artena.

Revision History

Description	Revision date	Version	Author
Initial draft	04 Feb 2014	1.0	George Drayer
Reviewed and updated	26 Feb 2015	2.0	Daniel Dixon
Final			



Prerequisites

- ❖ **1. Windows 2008 R2 SP1** or another operating system supported by SQL Server 2008 R2
- ❖ **2. SQL Server 2008 R2** (recommended: **SP2**)

Please refer to Microsoft's minimum Hardware and Software Requirements for Installing SQL Server 2008 R2. ([http://msdn.microsoft.com/en-us/library/ms143506\(v=sql.105\).aspx](http://msdn.microsoft.com/en-us/library/ms143506(v=sql.105).aspx))

Additional Prerequisites

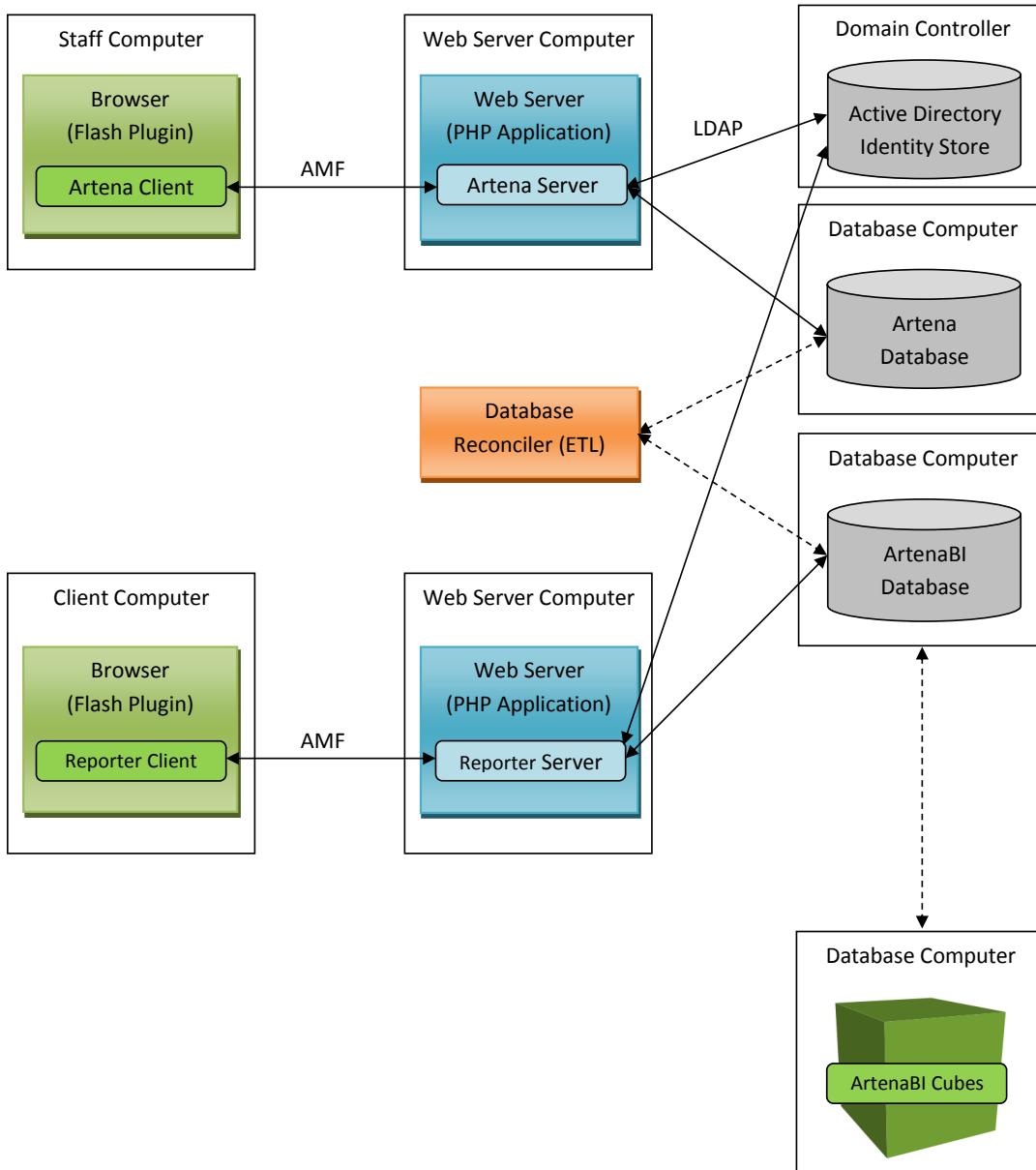
None

Formatted: Numbered + Level: 1 +
Numbering Style: 1, 2, 3, ... + Start at:
1 + Alignment: Left + Aligned at: 0.63
cm + Indent at: 1.27 cm

Formatted: Indent: Left: 0.63 cm,
Hanging: 0.63 cm, Numbered + Level:
1 + Numbering Style: 1, 2, 3, ... + Start
at: 1 + Alignment: Left + Aligned at:
0.63 cm + Indent at: 1.27 cm

Architecture

ArtenaBI uses a separate database to Artena. This guarantees the performance of both databases and allows for better security and more flexible deployment scenarios. A reconciler component is used to keep both databases in sync. (Note: optional Reporter and Cubes components shown here)





Release Package

The release package contains the following items:

- 1. etl_packages
- 2. sql_scripts
- 3. wap_artena

Formatted: Bulleted + Level: 1 +
Aligned at: 0.63 cm + Indent at: 1.27
cm, Tab stops: Not at 1.27 cm

Installation

1. Database

Create a new database on the database server with an appropriate name (for purposes of this guide we will use the name **ArtenaBIAuspex**).

Formatted: Outline numbered +
Level: 1 + Numbering Style: 1, 2, 3, ...
+ Start at: 1 + Alignment: Left +
Aligned at: 0 cm + Indent at: 0.63
cm, Tab stops: Not at 1.27 cm

Execute the following scripts against the database in the order given below (there should be no errors)

- 1. ArtenaBI_CreateScript.sql
- 2. ArtenaBI_UpdateScript-XX.YY.ZZ.sql (Where applicable: run each script in sequence according to the version number)

Formatted: Bulleted + Level: 1 +
Aligned at: 0.63 cm + Indent at: 1.27
cm, Tab stops: Not at 1.27 cm

2. ETL

The **ArtenaBIAuspex** ETL is comprised of three files:

- 1. ArtenaBI.dtsConfig (the ETL configuration)
- 2. ArtenaBIAuspex.dtsx (the ETL package)
- 3. **ArtenaBIAuspex**.SSISDeploymentManifest (the deployment utility, for SQL Server deployments)

Formatted: Outline numbered +
Level: 1 + Numbering Style: 1, 2, 3, ...
+ Start at: 1 + Alignment: Left +
Aligned at: 0 cm + Indent at: 0.63
cm, Tab stops: Not at 1.27 cm

Formatted: Bulleted + Level: 1 +
Aligned at: 0.63 cm + Indent at: 1.27
cm, Tab stops: Not at 1.27 cm

2.1 The Configuration File

The **ArtenaBIAuspex** configuration file is an XML document defining the various options that may be enabled or disabled for the ArtenaBI process. This file may be edited in a text editor.

Name	Purpose	Default Value
source_server	The server that hosts the Artena database.	(local)
source_db	The name of the Artena database.	Artena2008
dest_server	The server that hosts the ArtenaBI database.	(local)
dest_db	The name of the ArtenaBI database.	ArtenaBI
revenue	To enable/disable the Course, Programme and Miscellaneous Revenue calculation.	False
reporter	To enable/disable the processing of various data sets to support Reporter.	False
process_epis	To enable/disable the extraction of SDR data and to make use of it to calculate	True

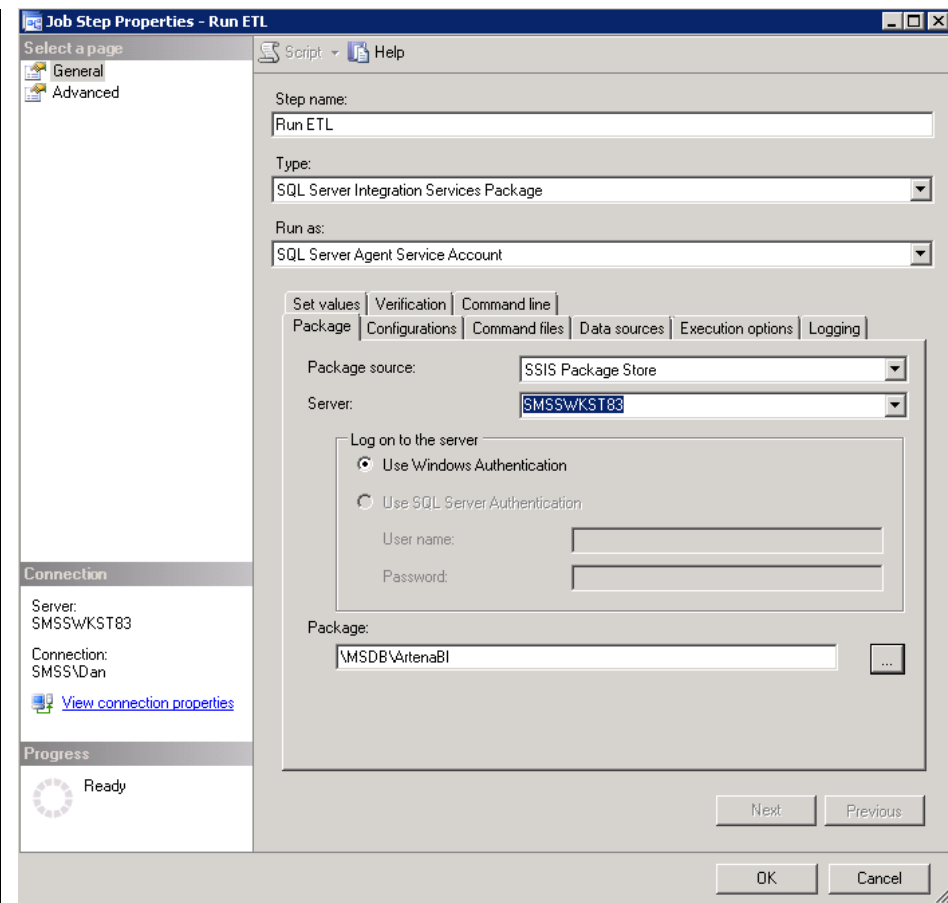
	the EPis	
cubes	To enable/disable the processing of the ArtenaBI Cubes.*	False
cubes_server	The server that hosts the ArtenaBI Cubes database*	(local)
<u>cubesaware_db</u>	The name of the ArtenaBI Cubes database.*	ArtenaBICubes

*Applicable only to ArtenaBI Cubes users.

2.2 The ETL File

Create the job

Create a SQL Server Agent job with a single step of type SQL Server Integration Services Package.



Job Step Properties - Run ETL

Select a page: General, Advanced

Script, Help

Step name: Run ETL

Type: SQL Server Integration Services Package

Run as: SQL Server Agent Service Account

Set values | Verification | Command line | Package | Configurations | Command files | Data sources | Execution options | Logging

Package source: SSIS Package Store

Server: SMSSWKST83

Log on to the server:

- ☒ Use Windows Authentication
- ☐ Use SQL Server Authentication

User name:

Password:

Package: \MSDB\ArtenaBI

Connection:

Server: SMSSWKST83

Connection: SMSS\Dan

[View connection properties](#)

Progress: Ready

Next Previous

OK Cancel




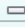
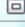

Add the Configuration file to the step.

The screenshot shows the "Job Step Properties - Run ETL" dialog box. On the left, there's a "Select a page" pane with "General" and "Advanced" tabs. Below this is a "Connection" section showing "Server: SMSSWKST83" and "Connection: SMSS\Dan" with a "View connection properties" link. At the bottom left is a "Progress" section with a circular progress indicator and the word "Ready". The main area has tabs for "Script" and "Help". Below these are fields for "Step name:" (containing "Run ETL"), "Type:" (a dropdown menu showing "SQL Server Integration Services Package"), and "Run as:" (a dropdown menu showing "SQL Server Agent Service Account"). A row of tabs includes "Set values", "Verification", "Command line", "Package", "Configurations", "Command files", "Data sources", "Execution options", and "Logging". The "Configurations" tab is active, showing a list of "Configuration files:" with one entry: "C:\Users\Dan\Desktop\01.00-RTS\ETL\ArtenaBI.dtsConfig". To the right of the list are up and down arrow buttons. Below the list are "Add" and "Remove" buttons. At the bottom right are "Next", "Previous", "OK", and "Cancel" buttons.

Click OK.

Schedule the job

Schedule the job to meet your business requirements.

 **New Job Schedule**   

Name:

Schedule type:

Recurring

☒ **Enabled**

One-time occurrence

Date:

Time:

Frequency

Occurs:

Weekly

Recurs every:

1

 week(s) on

☒ Monday

☒ Tuesday

☒ Wednesday

☒ Thursday

☒ Friday

☐ Saturday

☒ Sunday

Daily frequency

☒ Occurs once at:

☐ Occurs every:

1

 hour(s)

Starting at:

Ending at:

Duration

Start date:

☐ End date:

☒ No end date:

Summary

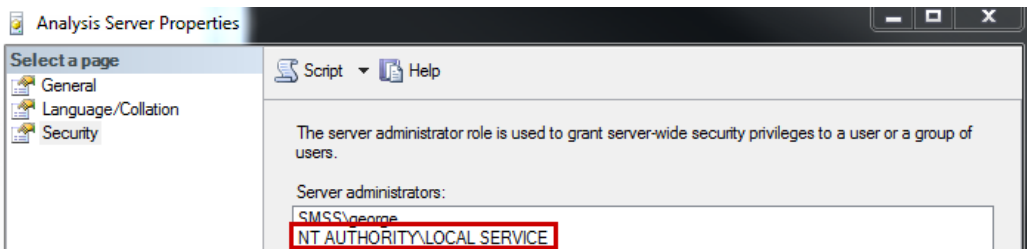
Description:

Appendix One: Artena BI Cubes Configuration

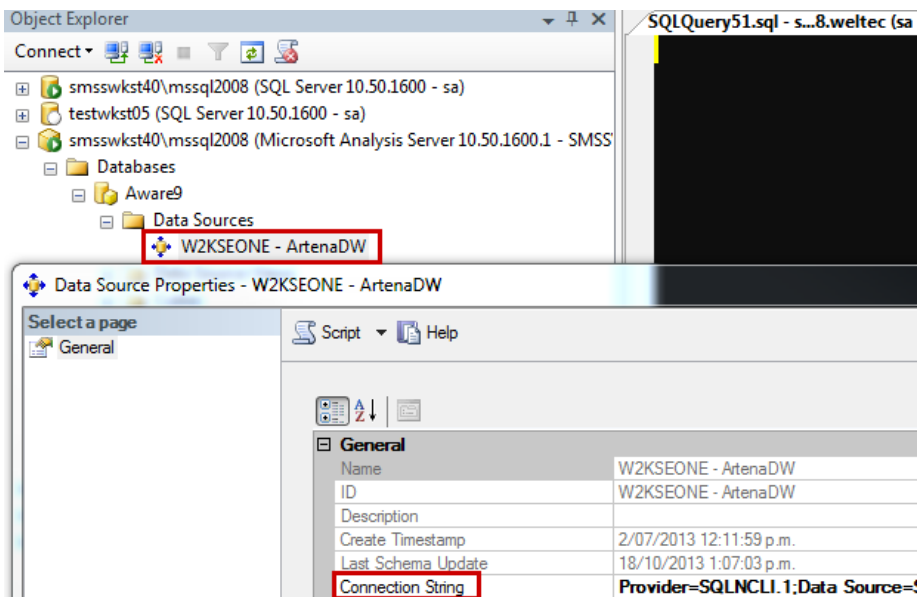
Database

- 1. Open a connection to the Analysis Server.
- 1. Open a XMLA query window on the server.
- 2. Execute the ArtenaBICubes.xmla script against the server.
- 3. Add the local service as an administrator on the server:

Formatted: Bulleted + Level: 1 +
Aligned at: 0.63 cm + Indent at: 1.27
cm, Tab stops: Not at 1.27 cm



- Configure the data source for the ArtenaBI Cubes database to point to the ArtenaBI database:
- 4. Ensure ArtenaBI.dtsConfig is pointing to the ArtenaBI Cubes database on the cubes_db line





Appendix Two: Artena BI Reporter Configuration

1. Accounts and Groups

1.1. Service Account

This is a **domain user account** that is used to run the IIS Application Pool or the Apache Service and connect to the database.

For the purpose of this document "**test\artena**" is used.

To create a new domain user account use the Active Directory Users and Computers tool.

Give the account an appropriate name, for example, **abireporter**. Clear the User must change password at next logon and select Password never expires.

Use a strong password for the account. Strong passwords should include at least seven characters with a mixture of uppercase and lowercase letters, numbers, and other characters such as *, ?, or \$.

1.2. Reporter Security Group

This is a **domain user group** used to authorize access to Reporter. Only users that are members of this group are able to login into Reporter. The name of the group is not important. It is commonly referred to as the "Artena Group" or "Artena Security Group".

2. Database

Execute the following scripts against the ArtenaBI database in the order given below (there should be no errors)

3. Reporter_CreateScript.sql

4. (Optional) AwareLite_MigrateScript.sql

1. Only run this if you were previously a user of AwareLite.

2. For this script to function correctly your AwareLite database must be on the same server as your ArtenaBI database and must be named AwareLite.

5. ArtenaBI_ReporterUpdateScript (Run each script in sequence according to the version number)

6.3. ETL

In the ArtenaBI configuration file (ArtenaBI.dtsConfig) set the reporter flag to True.

Formatted: Outline numbered + Level: 1 + Numbering Style: 1, 2, 3, ... + Start at: 1 + Alignment: Left + Aligned at: 0 cm + Indent at: 0.63 cm, Tab stops: Not at 1.27 cm

Formatted: Outline numbered + Level: 1 + Numbering Style: 1, 2, 3, ... + Start at: 1 + Alignment: Left + Aligned at: 0 cm + Indent at: 0.63 cm, Tab stops: Not at 1.27 cm

Formatted: Bulleted + Level: 1 + Aligned at: 0.63 cm + Indent at: 1.27 cm, Tab stops: Not at 1.27 cm

Formatted: Bulleted + Level: 2 + Aligned at: 1.9 cm + Indent at: 2.54 cm, Tab stops: Not at 2.54 cm

Formatted: Bulleted + Level: 1 + Aligned at: 0.63 cm + Indent at: 1.27 cm, Tab stops: Not at 1.27 cm

Formatted: Outline numbered + Level: 1 + Numbering Style: 1, 2, 3, ... + Start at: 1 + Alignment: Left + Aligned at: 0 cm + Indent at: 0.63 cm, Tab stops: Not at 1.27 cm



7.4. WAP – Web Server and PHP Setup

4.1 Unpacking the release

Prior to ArtenaBI 01.00.02 there are two versions of the web application:

1. reporter_ion - PHP files encoded for **ionCube Loader**

This version is for use with **Apache** and the Thread Safe (TS) PHP **Apache module**.

2. reporter_zgl - PHP files encoded for **ZendGuard Loader**

This version is for use with **IIS** and the Non-Thread Safe (NTS) PHP **FastCgi module**.

As of ArtenaBI 01.00.02 the web application for both Apache and IIS is encoded for the **ionCube Loader**

Note: Although it is possible to run PHP NTS as FastCgi under Apache and PHP TS as ISAPI module under IIS, it is recommended to use the combinations listed above.

Extract the package and place the web application files that match your web server and PHP version within the existing WAP structure on **C:** drive. This should result the following folder structure being created.

```
C:
|-- wap_artena          < Read & Execute, List Folder Contents, Read
|   |-- reporter
|   |   |-- private
|   |   |   |-- file_temp    < Write (Temporary files)
|   |   |   |-- logs         < Write (Application logs folder)
|   |   |   |-- server
|   |   |       |-- conf      < (Application configuration and admin scripts)
|   |   |       |-- ...       < (Some directories not listed for clarity)
|   |   |-- public           < (Reporter Client application files)
|   |       |-- docs         < (Reporter help documents)
|   |       |-- server       < (Reporter Server application files)
|-- wap
|   |-- apache
|   |-- php
|       |-- x.x.xx-nts
|       |-- x.x.xx-ts
|       |-- logs             < Write
|       |-- sessions         < Write
|       |-- temp              < Write
|-- www
```

Formatted: Outline numbered + Level: 1 + Numbering Style: 1, 2, 3, ... + Start at: 1 + Alignment: Left + Aligned at: 0 cm + Indent at: 0.63 cm, Tab stops: Not at 1.27 cm

Formatted: Bulleted + Level: 1 + Aligned at: 0.63 cm + Indent at: 1.27 cm, Tab stops: Not at 1.27 cm

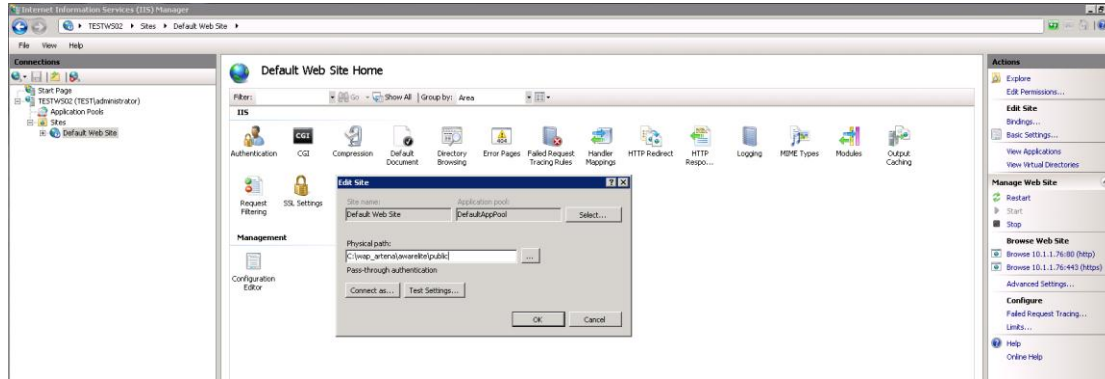
4.2 Assign file system privileges

The **test\artena** service account must be given the privileges as indicated above. The **Read & Execute, List Folder Contents, and Read** permission should apply **recursively**. Additionally the PHP **logs** and **temp** folder require **Write** permissions, as does the Reporter **file_temp** and **logs** folder.

4.3 Web Site Setup

4.3.a IIS 7, 7.5 - Website Setup

If the website is dedicated to Reporter, then you can simply change the **Default Web Site's** physical path to point to the **C:\wap_artena\reporter\public** folder.



While setting up WAP you would have already setup and configured

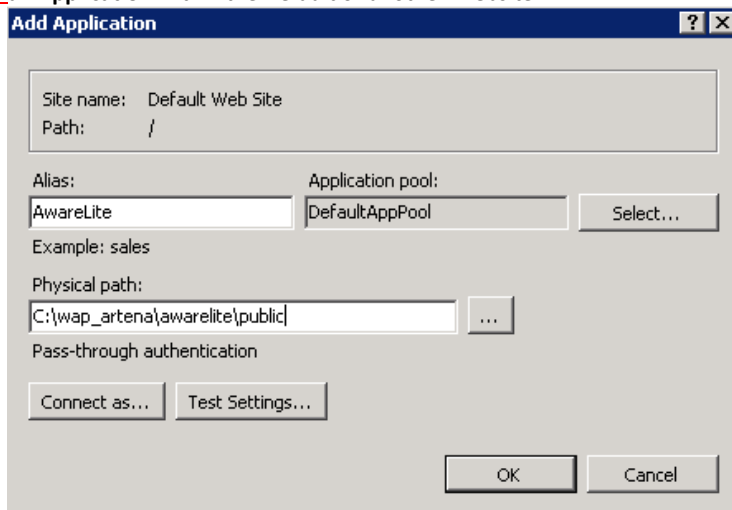
- 3. a FastCgiModule mapping for PHP
- 4. a FastCgi application
- 5. Application Pool identity
- 6. Anonymous authentication

Formatted: Bulleted + Level: 1 +
Aligned at: 0.63 cm + Indent at: 1.27
cm, Tab stops: Not at 1.27 cm

Reporter can also be setup as

- 7. a Website
- 8. an Application within the Default or another Website

Formatted: Bulleted + Level: 1 +
Aligned at: 0.63 cm + Indent at: 1.27
cm, Tab stops: Not at 1.27 cm



- 9. a Virtual Directory within the Default or another Website (not recommended)

Formatted: Bulleted + Level: 1 +
Aligned at: 0.63 cm + Indent at: 1.27
cm, Tab stops: Not at 1.27 cm



4.3.b Apache 2.4 - Website Setup

No special group membership required.

- 1. The **test\artena** service account must be set as the account the **Apache service** runs under.

4.3.b.1 Create and Configure the Reporter Virtual Host

Copy the **C:\wap_artena\wap\apache\conf\conf.d\Reporterawarelite.conf.dist** file to

C:\wap_artena\wap\apache\conf\conf.d\Reporterawarelite.conf

Edit the **C:\wap_artena\wap\apache\conf\conf.d\Reporterawarelite.conf** virtual host configuration file

Formatted: Bulleted + Level: 1 +
Aligned at: 0.63 cm + Indent at: 1.27
cm, Tab stops: Not at 1.27 cm

```
1 # _ipaddress_ #####
2 Listen _ipaddress_:80
3
4 <VirtualHost _ipaddress_:80>
5     DocumentRoot "C:/wap_artena/awarelite/public"
6     ServerName _ipaddress_or_domainname_
7     ErrorLog logs/awarelite-error.log
8     CustomLog logs/awarelite.log common
9     Timeout 300
10    KeepAlive On
11    KeepAliveTimeout 300
12    MaxKeepAliveRequests 100
13
14    <Directory "/">
15        Options None
16        AllowOverride None
17        Order allow,deny
18        Allow from all
19    </Directory>
20 </VirtualHost>
21
22 Listen _ipaddress_:443
23
24 <VirtualHost _ipaddress_:443>
25     DocumentRoot "C:/wap_artena/awarelite/public"
26     ServerName _ipaddress_or_domainname_
27     ErrorLog logs/awarelite-error.log
28     CustomLog logs/awarelite-access.log common
29     Timeout 300
30     KeepAlive On
31     KeepAliveTimeout 300
32     MaxKeepAliveRequests 100
33
34     <Directory "/">
35         Options None
36         AllowOverride None
37         Order allow,deny
38         Allow from all
39     </Directory>
40
41     SSLEngine on
42     SSLCipherSuite ALL:!ADH:!EXPORT56:RC4+RSA:+HIGH:+MEDIUM:+LOW:+SSLv2:+EXP:+eNULL
43     SSLCertificateFile conf/ssl.crt/server.crt
44     SSLCertificateKeyFile conf/ssl.key/server.key
45     #SSLCertificateChainFile conf/ssl.crt/ca.crt
46     #SSLCACertificatePath conf/ssl.crt
47     #SSLCACertificateFile conf/ssl.crt/ca-bundle.crt
48     #SSLCARevocationPath conf/ssl.crl
49     #SSLCARevocationFile conf/ssl.crl/ca-bundle.crl
50     SSLVerifyClient require
51     #SSLVerifyDepth 10
```



- Replace all instances of **_ipaddress_** with the IP Address dedicated to Reporter.
- Replace the all instances of **_ipaddress_or_domainname_** with the IP Address or Domain Name.
- Replace the **server.crt** and **server.key** with the certificate and key for your server.
- Restart the Apache Artena service for your changes to take effect.

Configuration

1. Reporter Application Configuration

Reporter uses the configuration for database, file storage, reports, and email settings. Configuration options are set in the **C:\wap_artena\ArtenaBI\Reporter\Server\private\server\conf\config.php** application configuration file. Please take care when editing.

On initial setup copy the **C:\wap_artena\ArtenaBI\Reporter\Server\private\server\conf\config.php.dist** file to **C:\wap_artena\ArtenaBI\Reporter\Server\private\server\conf\config.php**

Edit the **C:\wap_artena\ArtenaBI\Reporter\Server\private\server\conf\config.php** application configuration file and configure the application for your environment.

When upgrading, read the Release Notes, and compare the new **config.php.dist** with your active configuration and merge the changes as required. (New configuration options may have been introduced, or existing ones removed/renamed.)

1.1. Configuration Options

All Reporter configuration options are detailed in the Configuration Options Table in the following layout/format

//section comment(for visual grouping)-----	
option_name	Option description
	Allowed Values: value1 value2 or An explanation of the allowed values.
	Example (Syntax): sample value
	Detail:

The Reporter configuration options are listed in the table below

Formatted: Indent: Left: 0 cm, Hanging: 0.75 cm, Outline numbered + Level: 1 + Numbering Style: 1, 2, 3, ... + Start at: 1 + Alignment: Left + Aligned at: 0 cm + Indent at: 0.63 cm, Tab stops: Not at 1.27 cm

Configuration Options Table

//global

PRODUCTION_SERVER DEBUGGING_ENABLED

Global Reporter configuration

Allowed Values:

PRODUCTION_SERVER = **true/false**

DEBUGGING_ENABLED = **true/false**

Example (Syntax):

```
if (!defined('PRODUCTION_SERVER')) define('PRODUCTION_SERVER', false);
```

```
if (!defined('DEBUGGING_ENABLED')) define('DEBUGGING_ENABLED', true);
```

Detail:

PRODUCTION_SERVER should be set to **true** in live environment.

Debugging can be enabled in order for the application to log debug and error messages.

In production, messages passed back to the client are filtered, in order not to reveal sensitive information.

//databases

databases

The database configuration settings for the ArtenaBI database.

Allowed Values:

Mandatory:

driver => sqsrv

dbhost => (local), hostname, or IP address

dbname => the name of the database

Optional:

username => the username to connect with

password => encrypted password

drivername => SQL Native Client or SQL Server Native Client 10.0

Example:

```
$cfg->databases = array (
    'reporter' => array('driver' => 'sqlsrv', 'dbhost' => '(local)', 'dbname' =>
        'ArtenaBI')
);
```

Detail:

Both username and password configuration options must be present and not blank in order to use username and password authentication. Keep the database configuration on one line as per the example.

//authentication	
<u>auth_provider</u>	<p>The authentication provider to use.</p> <p>Allowed Values:</p> <p><u>ldap</u></p> <p>Example:</p> <p><u>\$cfg->auth_provider = 'ldap';</u></p>
<u>auth_provider ldap create dbuser</u>	<p>Option to create a DB user.</p> <p>Allowed values</p> <p><u>True</u></p> <p><u>false</u></p> <p>Example:</p> <p><u>\$cfg->auth_provider ldap createdbuser = true;</u></p>
//site information	
<u>site_name</u>	<p>The site name to use for email subject lines.</p> <p>Example:</p> <p><u>\$cfg->site_name = 'Artena';</u></p>
//mail	
<u>mail_provider</u>	<p>Provider that is used to send emails.</p> <p>Example:</p> <p><u>\$cfg->mail_provider = 'smtp';</u></p>
<u>smtp_host</u>	<p>IP Address or hostname of the SMTP server.</p> <p>Example:</p> <p><u>\$cfg->smtp_host = '192.168.0.3';</u></p>
<u>smtp_port</u>	<p>SMTP port is optional. Can be used if SMTP server is listening on a non-default port.</p> <p>Example:</p> <p><u>\$cfg->smtp_port = '25';</u></p>
<u>smtp_username</u>	<p>Optional username if SMTP authentication used to send emails.</p> <p>Example:</p> <p><u>\$cfg->smtp_username = 'root';</u></p>



<u>smtp_password</u>	<p>Encrypted password of the account used to authenticate and send emails.</p> <p>Example: <code>\$cfg->smtp_password = 'ABCXYZ';</code></p> <p>Detail: Password must be encrypted using encrypt_password.php command line file. To do so run run_script.cmd batch file and enter encrypt_password.php when prompted, then enter the password, and use the generated encrypted value.</p>
<u>from_name</u>	<p>From name to use when sending emails.</p> <p>Example: <code>\$cfg->from_name = 'Reporter';</code></p>
<u>from_email</u>	<p>Email address of the account used to authenticate and send emails.</p> <p>Example: <code>\$cfg->from_email = 'reporteruser@server.domain';</code></p>
//security	
<u>maintenance_mode</u>	<p>In maintenance mode only the user specified by the maintenance_mode_user configuration option is allowed to login and perform operations.</p> <p>Allowed Values: <code>true</code> or <code>false</code></p> <p>Example: <code>\$cfg->maintenance_mode = true;</code></p> <p>Detail: Default is <code>false</code>.</p>
<u>maintenance_mode_user</u>	<p>The username of the user allowed to login and perform operations in Reporter during maintenance mode.</p> <p>Example: <code>\$cfg->maintenance_mode_user = 'AA';</code></p>
<u>session_timeout</u>	<p>Time out for a session in minutes</p> <p>Example: <code>\$cfg->session_timeout = 30;</code></p> <p>Detail: Value is in minutes.</p>
//ldap	

<u>ldap_host</u>	<u>IP Address of ldap Server</u> <u>Allowed values:</u> <u>IP address</u> <u>Example:</u> <u>\$cfg->ldap_host = '10.1.1.120';</u>
<u>ldap_domain</u>	<u>Domain Name of ldap Server</u> <u>Allowed Values:</u> <u>Domain name</u> <u>Example:</u> <u>\$cfg->ldap_domain = 'test';</u>
<u>ldap_base_query</u>	<u>Fully qualified domain name for ldap</u> <u>Example:</u> <u>\$cfg->ldap_base_query = 'DC=test,DC=domain';</u>
<u>ldap_application_group_name</u>	<u>Example:</u> <u>\$cfg->ldap_application_group_name =</u> <u>'CN=ArtenaGroup,OU=Groups,DC=Test,DC=Domain';</u>
<u>ldap_login_name_attribute</u>	<u>Example:</u> <u>\$cfg->ldap_login_name_attribute = 'sAMAccountName';</u>
<u>ldap_memberof_attribute</u>	<u>Example:</u> <u>\$cfg->ldap_memberof_attribute = 'memberOf';</u>
<u>ldap_display_name_attribute</u>	<u>Example:</u> <u>\$cfg->ldap_display_name_attribute = 'cn';</u>
<u>ldap_sync_user_loginname</u>	<u>Example:</u> <u>\$cfg->ldap_sync_user_loginname = 'AA';</u>
<u>ldap_user_in_group_method</u>	<u>The method used to determine if a user belongs to a group.</u> <u>Allowed Values:</u> <u>userinfo or searchfilter</u> <u>Example:</u> <u>\$cfg->ldap_user_in_group_method = 'userinfo';</u>



	<p>Detail: <u>This setting is optional. If not set userinfo is used by default.</u></p>
<u>ldap_use_ssl</u>	<p><u>Connect to the ldap server with secure LDAP.</u></p> <p>Allowed Values: <u>true or false</u></p> <p>Example: <u>\$cfg->ldap_use_ssl = true;</u></p> <p>Detail: <u>This setting is optional. If not set false is used by default.</u></p> <p><u>The server must support LDAPS connections.</u></p>
<u>//file management -----</u>	
<u>temp_directory</u>	<p><u>Directory for creating temporary files.</u></p> <p>Example: <u>\$cfg->temp_storage = 'D:\\path\\to\\file temp\\';</u></p>
<u>//help docs -----</u>	
<u>docs_root</u>	<p><u>Contains the Reporter Help Docs content.</u></p> <p>Example: <u>\$cfg->docs_root = 'D:\\path\\to\\docs root\\';</u></p>