



ArtenaSPETL Deployment Guide



Contents

| | |
|---------------------------|----|
| Introduction | 2 |
| About This Document | 2 |
| <i>Purpose</i> | 2 |
| Intended Audience..... | 3 |
| Assumptions..... | 3 |
| ArtenaSPETL..... | 4 |
| Preparation | 4 |
| Deployment..... | 4 |
| Create a Jobs | 5 |
| Package Variables | 5 |
| Create Schedules..... | 10 |

Introduction

About This Document

This document is intended as a guide to deployment of the ArtenaSPETL SQL Server Intergration Services (SSIS) package.

Purpose

To aid in the deployment of the ArtenaSPETL SSIS package.

Intended Audience

The reader is assumed to be:

- A person responsible for deploying the ArtenaSPETL SSIS package.

Assumptions

1. The **Artena 9 database** has been setup on a SQL Server instance on the same LAN.
2. The **ArtenaSP database** has been setup on a SQL Server instance on the same LAN.
3. The package will be deployed to a server with SQL Server 2008 R2 installed and running **SQL Server Integration Services**.
4. The person doing the deployment is familiar with creating jobs in the **SQL Server Agent**.
5. The person doing the deployment is familiar with running SQL scripts against databases on SQL Server 2008 R2 instance.
6. The person doing the deployment is familiar with zip archives and file system operations.

ArtenaSPETL

ArtenaSP ETL is provided by a single SSIS package **ArtenaSPETL.dtsx**

Preparation

Before the deployment you will need to have a number of pieces of information.

1. The name of the SQL Server 2008 R2 instance that the Artena 9 database is on.
2. The name of the Artena 9 database.
3. The name of the SQL Server 2008 R2 instance that the ArtenaSP database is on.
4. The name of the ArtenaSP database.
5. The name of the SQL Server 2008 R2 instance with SSIS that will run the package.

Deployment

1. Copy the package **ArtenaSPETL.dtsx** to a folder on the SQL Server 2008 R2 instance with SSIS.

Create a Jobs

Create two jobs in SQL Server Agent.

| Job Name | Description |
|-----------------|---|
| ArtenaSP_Lookup | Update of lookup, offered teaching, and campaign data. This job needs to run at most on a nightly schedule. |
| ArtenaSP_Main | Processing of web requests. This job needs to run on a more frequent schedule, but not more frequent than it takes to complete the job plus some time to spare. Hourly schedule might be good enough. |

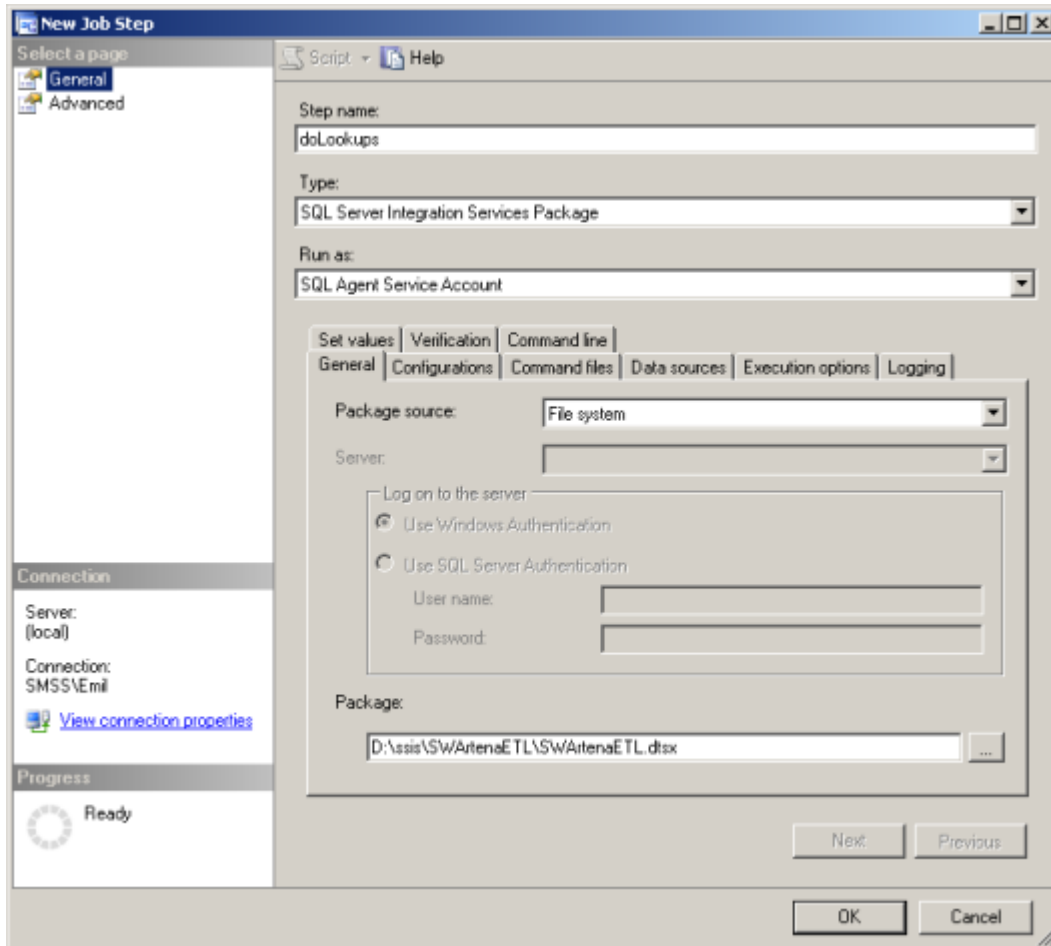
Package Variables

| Variable Name | Default Value | Description |
|-----------------|---------------|---|
| aServer | (local) | The name of the server where the Artena 9 database lives. |
| aDatabase | Artena | The name of the Artena 9 database. |
| wServer | (local) | The name of the server where the ArtenaSP database lives. |
| wDatabase | ArtenaSP | The location of the debtor extract file. |
| doOTandLookups | false | true/false – Set to false to skip the OT and Lookups update. |
| doMain | true | true/false – Set to false to skip the OT and Lookups update. |
| wDeleteOnReject | true | true/false – Set to true to delete data associated with rejected registration requests. Set to false to keep it. |
| logDirectory | | Where should the package execution be logged to. If left blank |

| | | |
|--|--|--|
| | | the package location directory will be used. |
|--|--|--|

ArtenaSP_Lookup

Create a ArtenaSP_Lookup job with a single step of type SQL Server Integration Services Package.



New Job Step

Select a page: **General** | Advanced

Script | Help

Step name: doLookups

Type: SQL Server Integration Services Package

Run as: SQL Agent Service Account

Set values | Verification | Command line | General | Configurations | Command files | Data sources | Execution options | Logging

Package source: File system

Server:

Log on to the server:

☒ Use Windows Authentication

☐ Use SQL Server Authentication

User name:

Password:

Package: D:\ssis\SW\ArtenaETL\SW\ArtenaETL.dtsx

Next Previous

OK Cancel

Connection:

Server: (local)

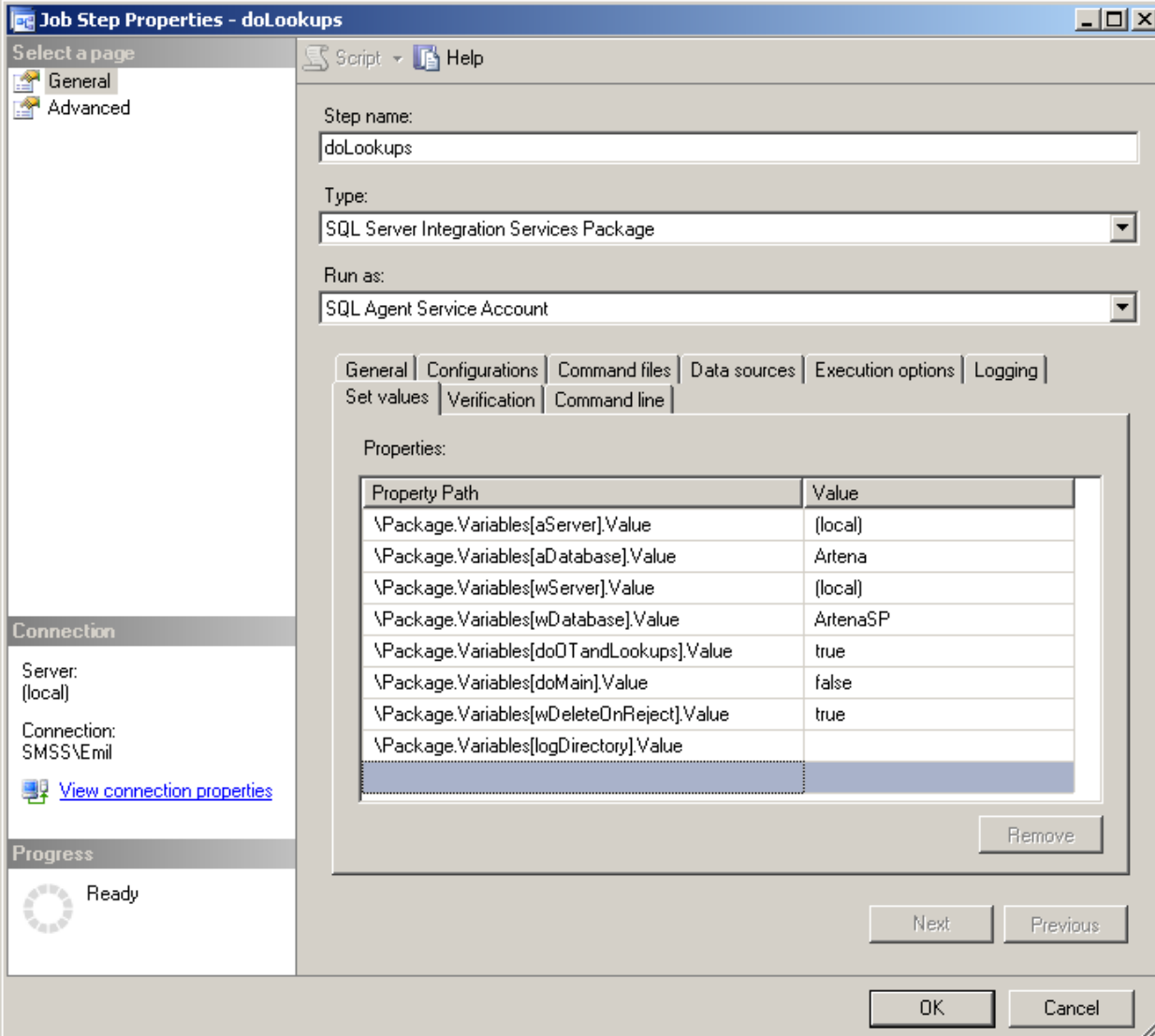
Connection: SMSS\Emil

[View connection properties](#)

Progress:

Ready

Set the values of the package variables for the job step.



Job Step Properties - doLookups

Select a page: **General** | Advanced

Script | Help

Step name: doLookups

Type: SQL Server Integration Services Package

Run as: SQL Agent Service Account

General | Configurations | Command files | Data sources | Execution options | Logging

Set values | Verification | Command line

Properties:

| Property Path | Value |
|---|----------|
| \Package.Variables[aServer].Value | (local) |
| \Package.Variables[aDatabase].Value | Artena |
| \Package.Variables[wServer].Value | (local) |
| \Package.Variables[wDatabase].Value | ArtenaSP |
| \Package.Variables[doOTandLookups].Value | true |
| \Package.Variables[doMain].Value | false |
| \Package.Variables[wDeleteOnReject].Value | true |
| \Package.Variables[logDirectory].Value | |

Remove

Next Previous

OK Cancel

Connection

Server: (local)

Connection: SMSS\Emil

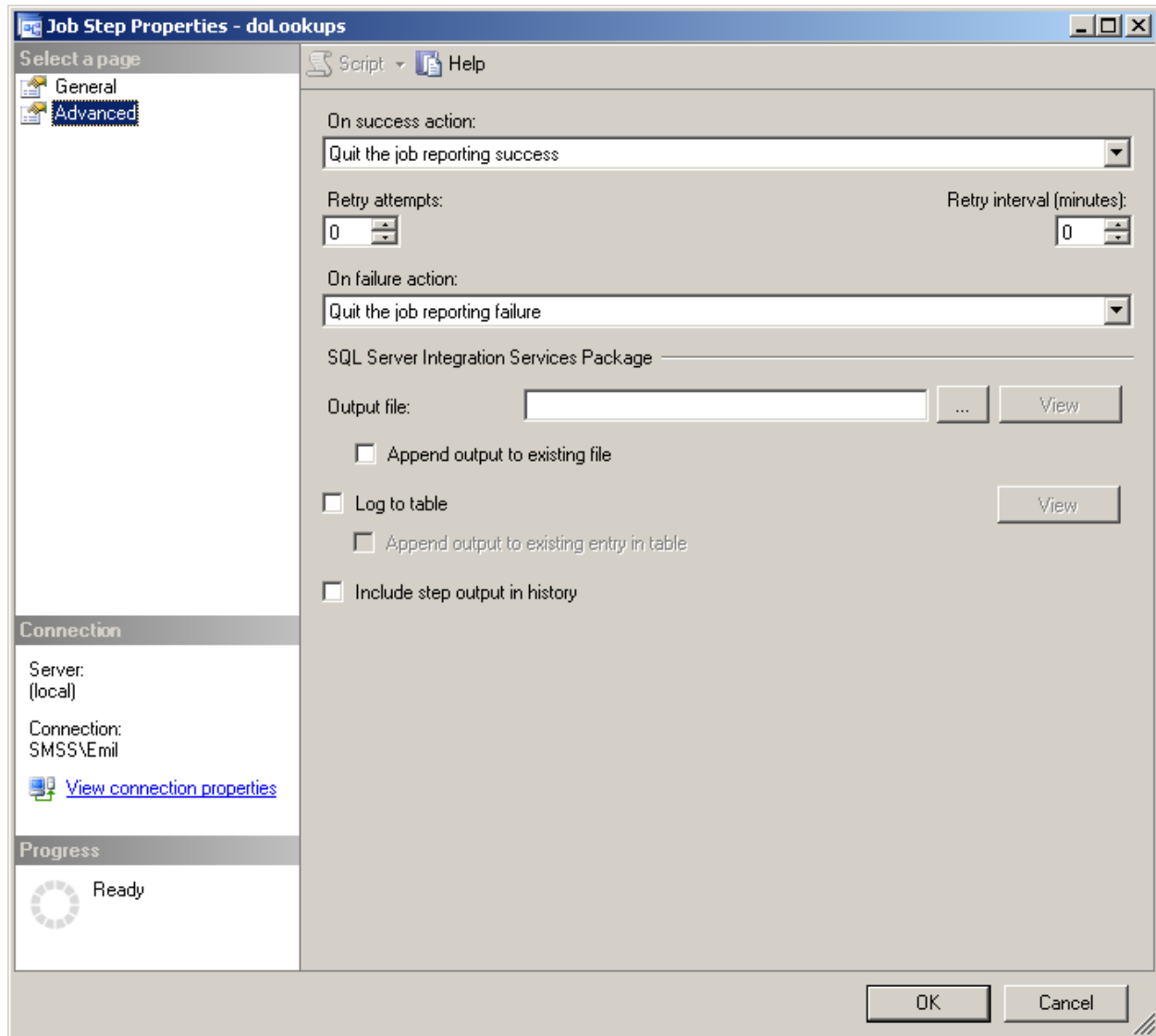
[View connection properties](#)

Progress

Ready

Set **doOTandLookups** to **true**, and **doMain** to **false**.

Set the Advanced properties for the job step.



ArtenaSP_Main

Create a ArtenaSP_Main job with a single step of type SQL Server Integration Services Package.

Set **doOTandLookups** to **false**, and **doMain** to **true**.

Set the Advanced properties for the job step.

Create Schedules

Finally, create schedules to meet your business requirements.

| Job Name | Description |
|-----------------|--|
| ArtenaSP_Lookup | <p>Update of lookup, offered teaching, and campaign data.</p> <p>This job needs to run at most on a nightly schedule.</p> <p>Lookup table and Web OTEs do not change all that often.</p> |
| ArtenaSP_Main | <p>Processing of web requests.</p> <p>This job needs to run on a more frequent schedule, but not more frequent than it takes to complete the job plus some time to spare.</p> <p>Hourly schedule might be good enough.</p> |