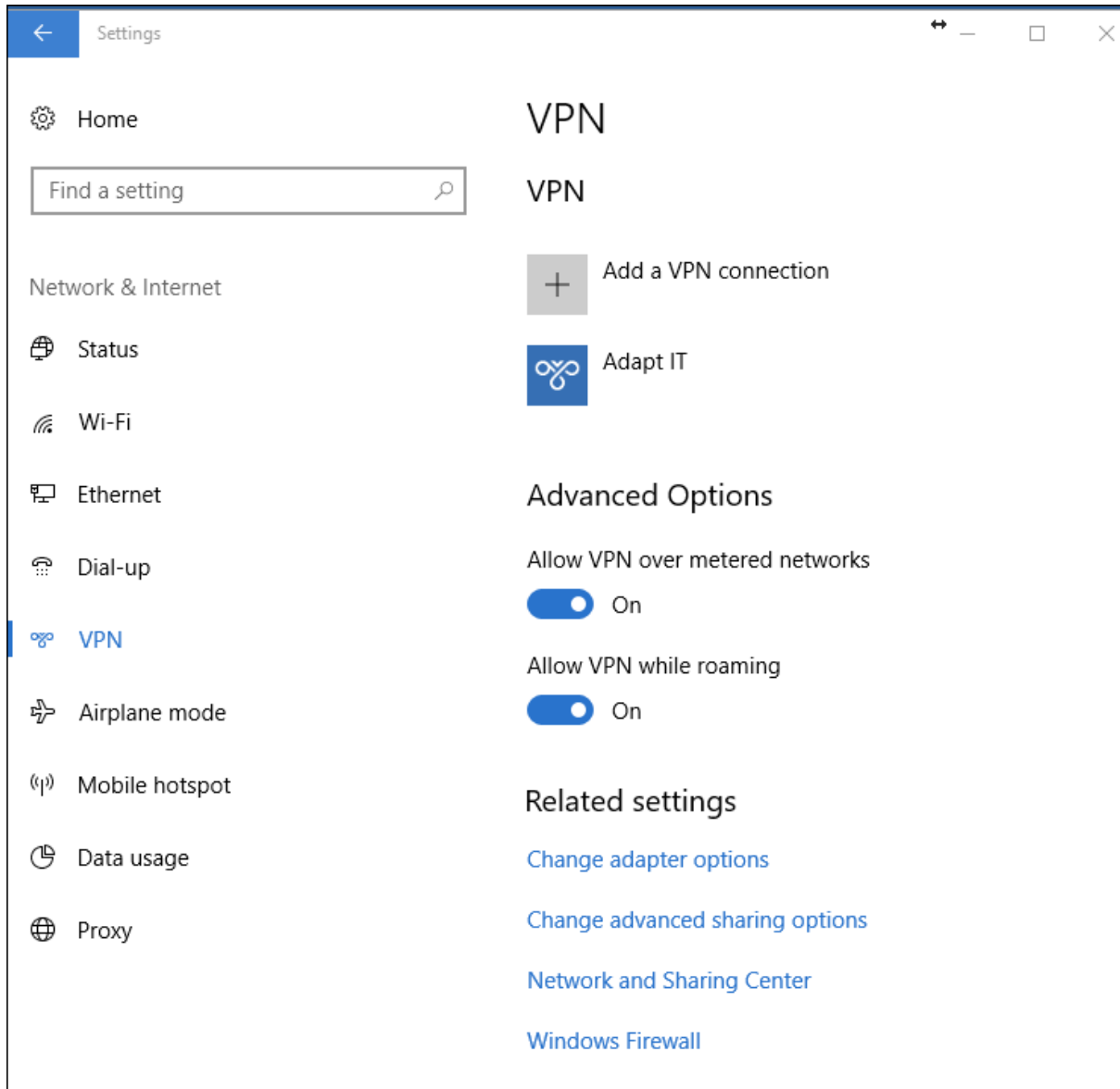


## Set-up VPN



## Edit VPN connection

These changes will take effect the next time you connect.

Connection name

Adapt IT



Server name or address

218.101.3.42

VPN type

Point to Point Tunneling Protocol (PPTP)



Type of sign-in info

User name and password



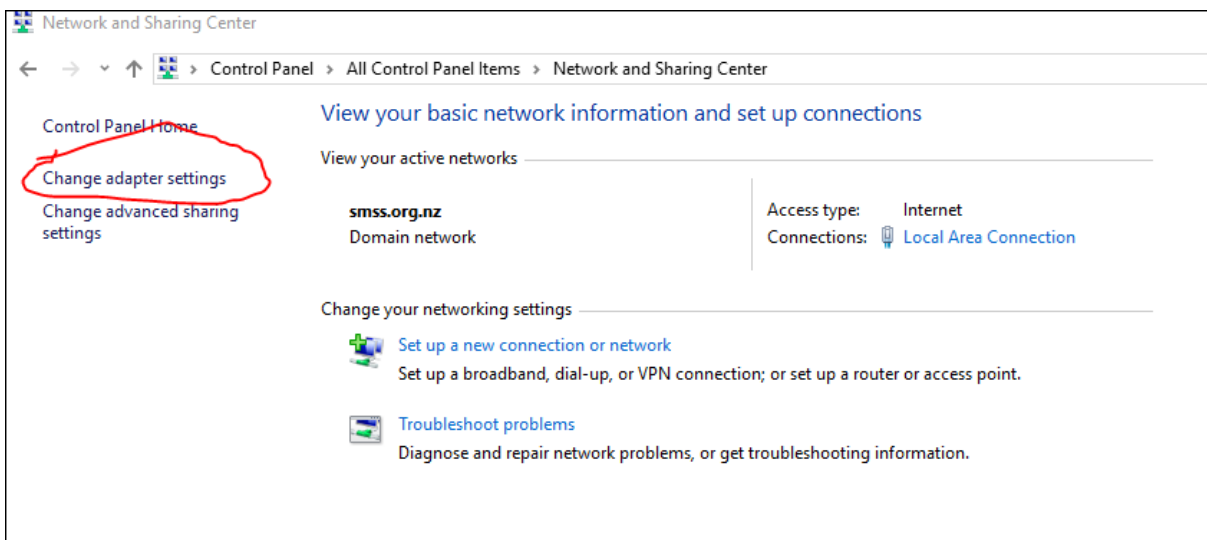
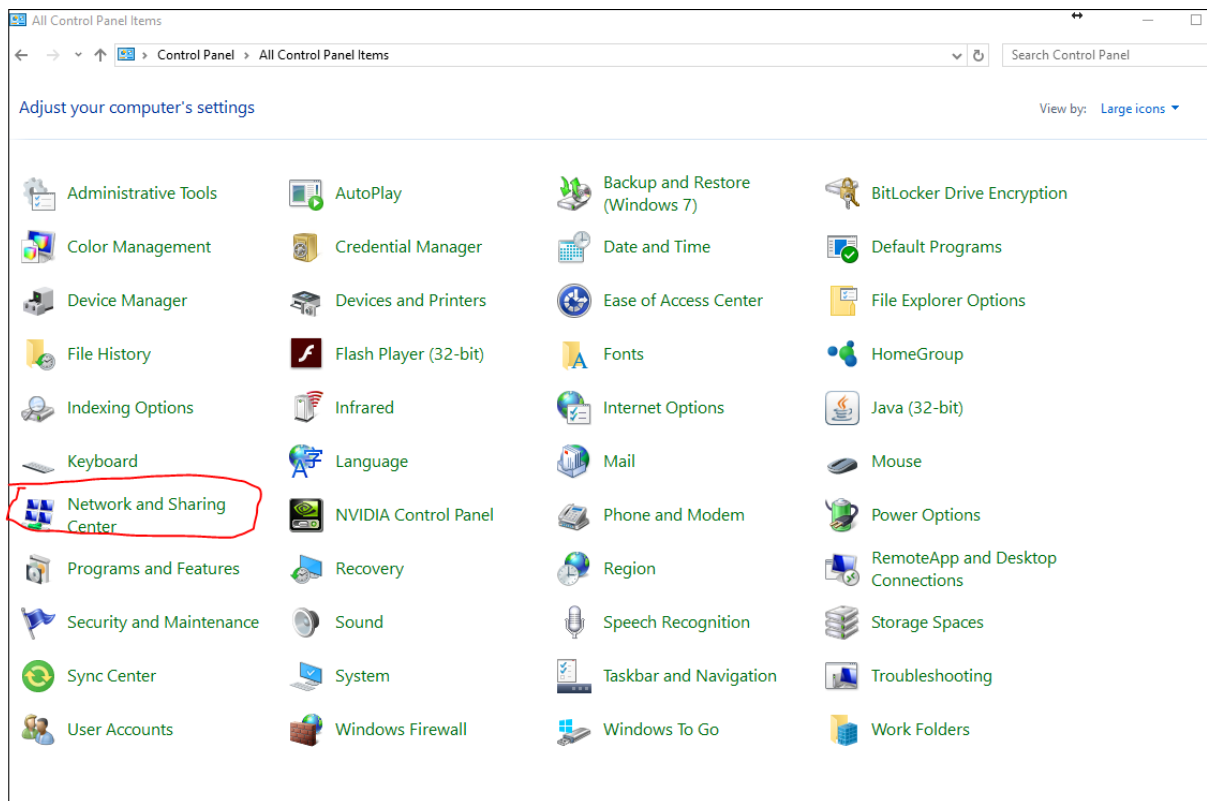
User name (optional)

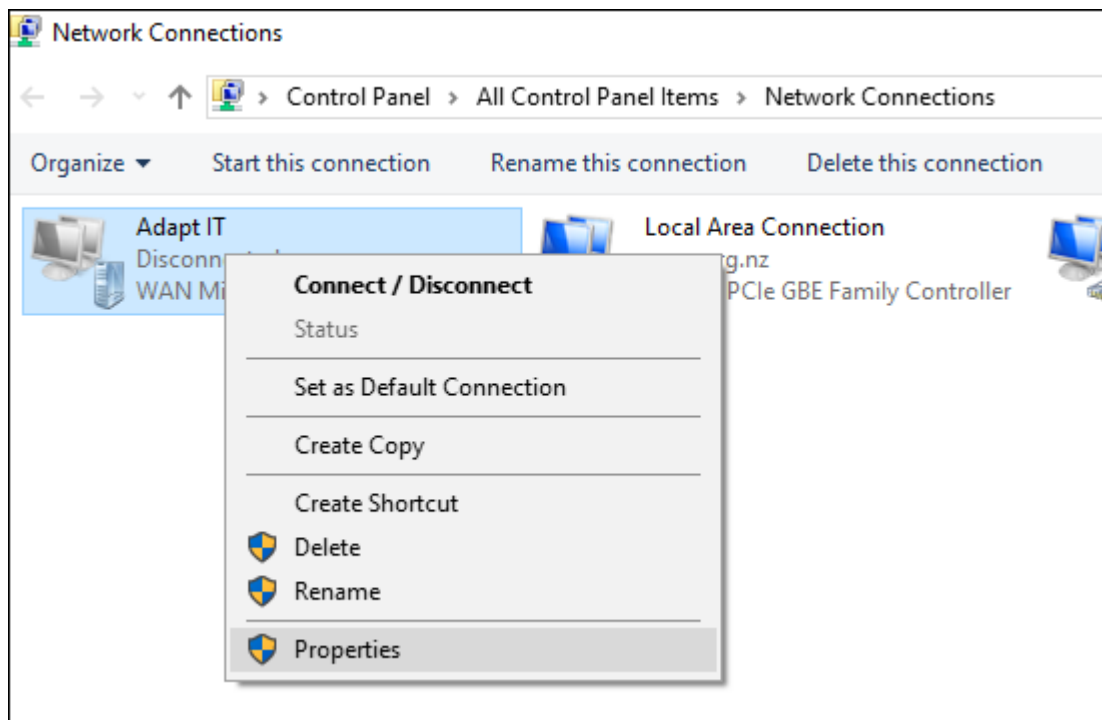
Password (optional)

☐ Remember my sign-in info

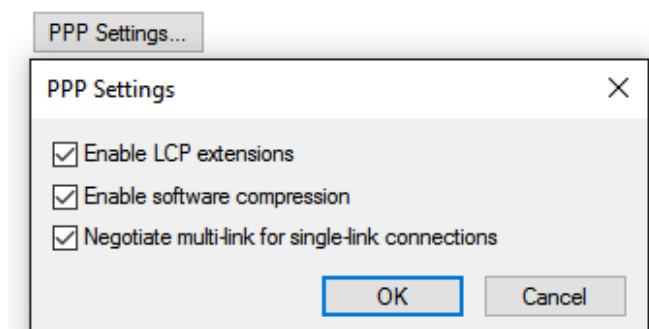
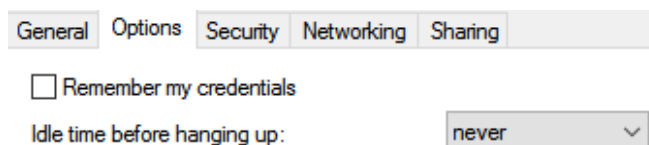
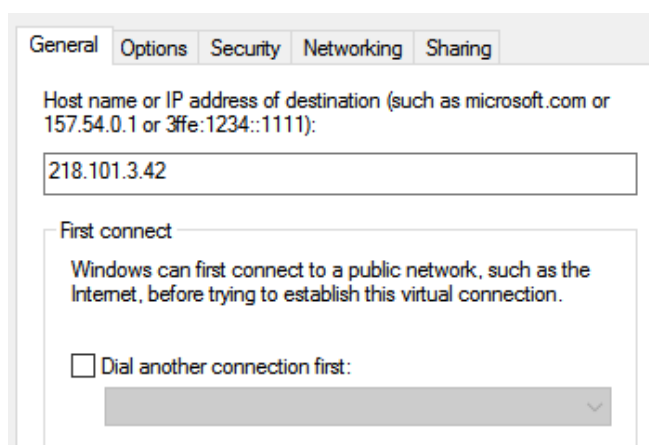
Save

Cancel





#### VPN Adaptor Settings (26.06.17)



General	Options	Security	Networking	Sharing
---------	---------	----------	------------	---------

Type of VPN:

Point to Point Tunneling Protocol (PPTP) ▼

Advanced settings

Data encryption:

Optional encryption (connect even if no encryption) ▼

Authentication

☐ Use Extensible Authentication Protocol (EAP)

▼

Properties

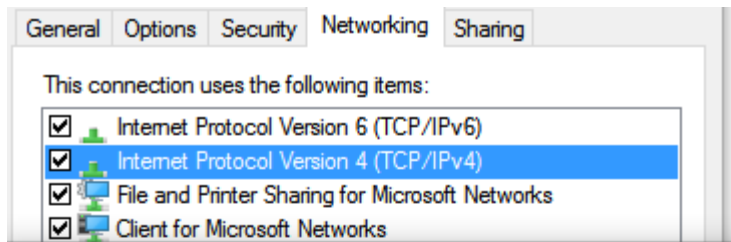
☒ Allow these protocols

☐ Unencrypted password (PAP)

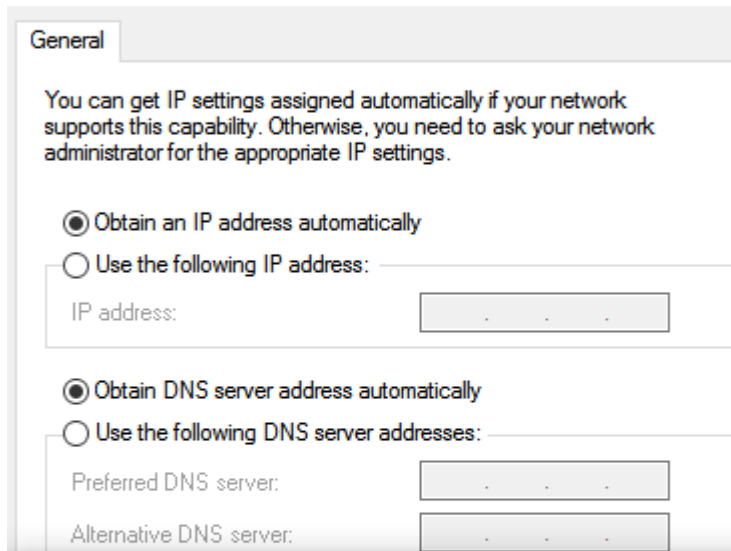
☒ Challenge Handshake Authentication Protocol (CHAP)

☒ Microsoft CHAP Version 2 (MS-CHAP v2)

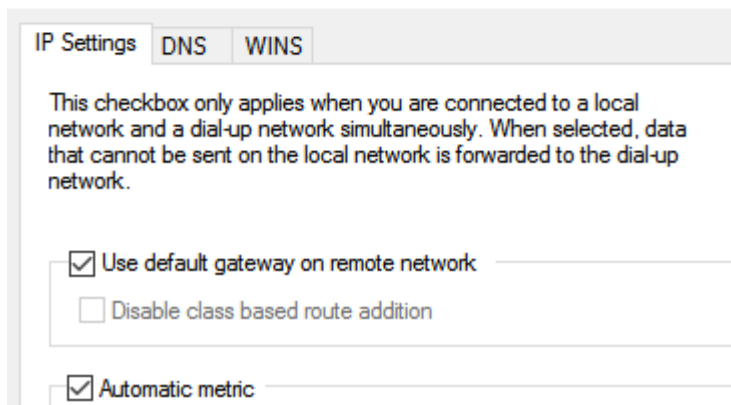
☐ Automatically use my Windows log-on name and password (and domain, if any)



#### Internet Protocol Version 4 (TCP/IPv4) Properties

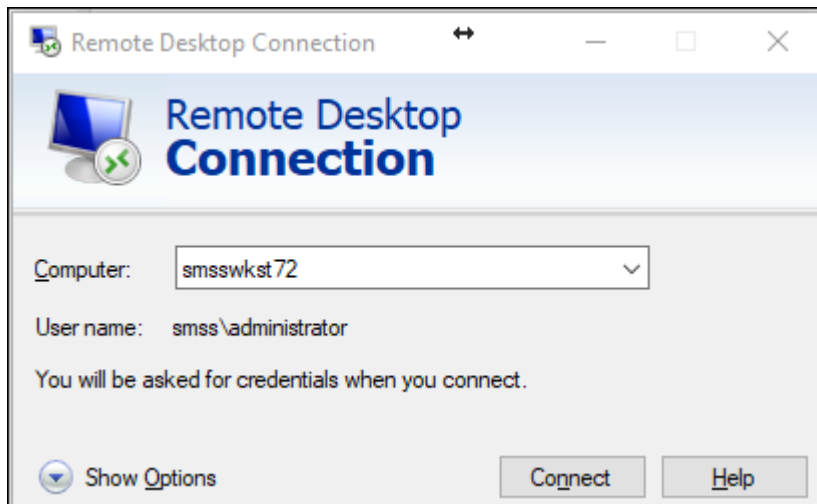


#### Advanced TCP/IP Settings

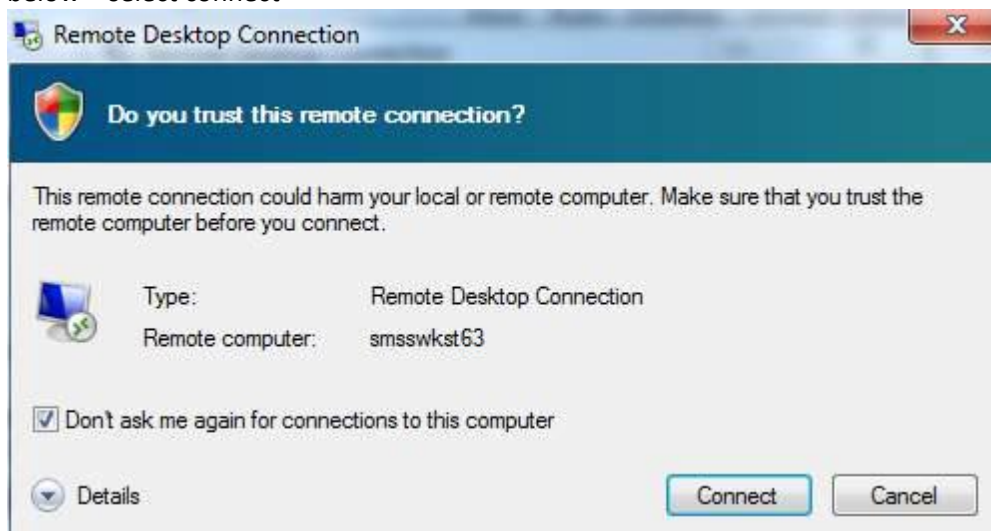


### Then to remote access:

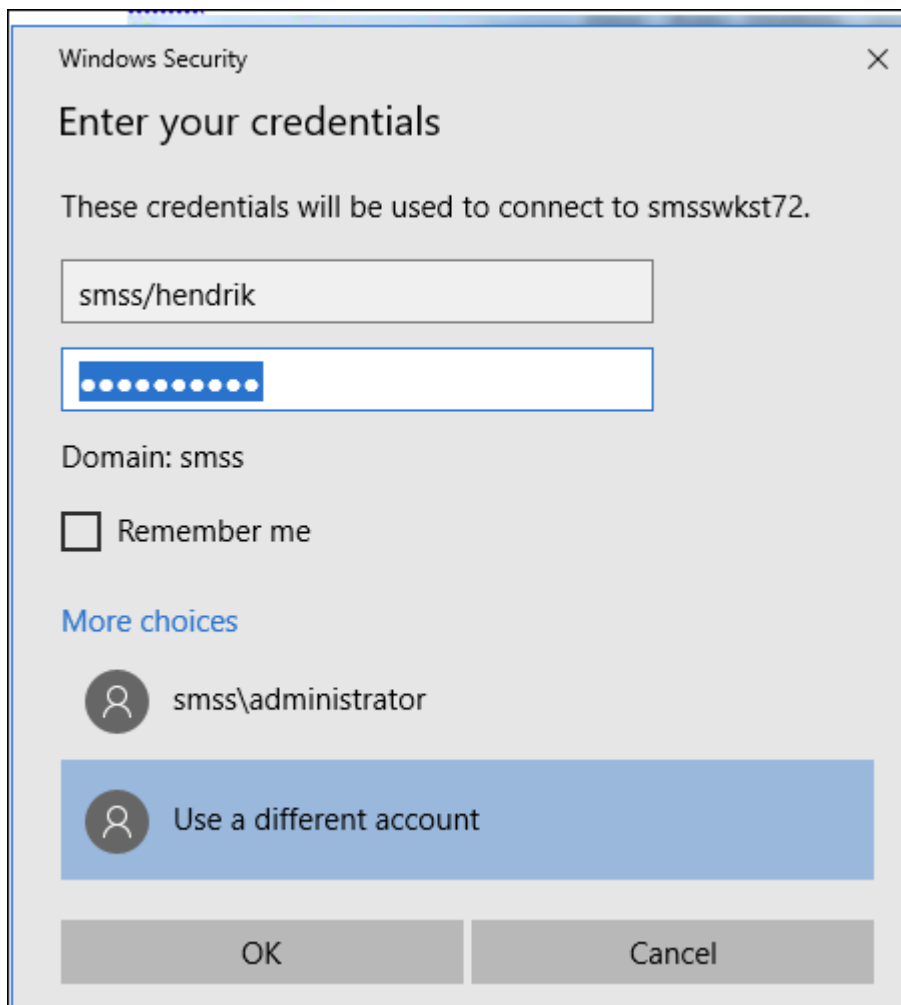
1. Navigate to "Remote Desktop Connection" (Start> Windows Accessories) you will receive the below dialogue box



2. Enter your computer name (e.g. smsswkst72) and select connect. You will be to confirm you trust this connection as below – select connect



3. You will now be asked to enter your credentials (this will be your computer logon details but start with SMSS/ before your name). Enter these and select "OK". If you need to change it, click on 'More Choices' and 'Use a different account'.



You will now be connected to you PC.