

# STUDENT *Success*

## NorthTec

### Development of Artena Student Support Module 2017



Natalie Moffat – Student Advisor, Student Success Team

## NorthTec Quick Facts

- 6 campuses: Whangarei (2), Kerikeri, Rawene, Kaikohe, Kaitaia
- Over 60 community based delivery locations from Coatesville in rural Rodney to Ngataki in the Far North
- Over 100 programmes (Level 2 - Level 7)

Age Group	2015	2016	2017
19 and Under	2316	2323	1090
20-24	1831	1988	1357
25-34	2201	2283	1376
35-44	1531	1456	822
45 and Over	2745	2519	1118
<b>Total</b>	<b>10624</b>	<b>10569</b>	<b>5763</b>

## NorthTec Quick Facts

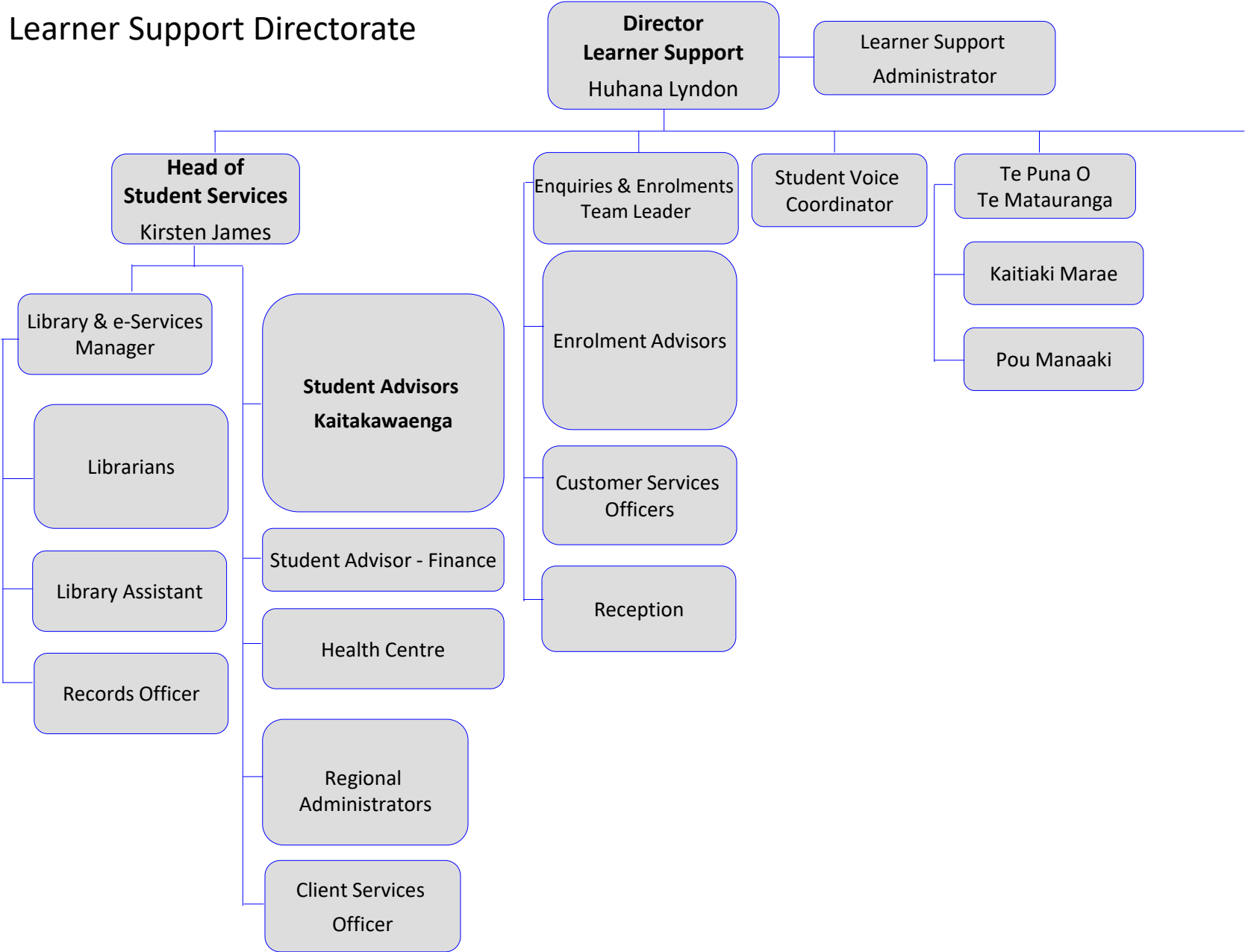
Gender	2015	2016	2017
Female	4600	4306	2731
Male	6022	6262	3030
Other	2	1	2
<b>Total</b>	<b>10624</b>	<b>10569</b>	<b>5763</b>

Ethnicity Group	2015	2016	2017
NZ European/Pakeha	4770	4714	2110
NZ Maori	4285	3993	2423
Other	1569	1862	1230
<b>Total</b>	<b>10624</b>	<b>10569</b>	<b>5763</b>

## Student Success Team Quick Facts

- 8 Student Advisors (includes three Kaitakawaenga), Youth Guarantee Youth Worker, Team of Counsellors (via contracted service – Vitae), Chaplain, three Registered Nurses, Student Voice Coordinator and Administrator, Student Success Team Administrator (all Advisors .8FTE)
- Professional qualifications in teaching, management, social work, career development, financial advice and budgeting
- Services provided from Monday-Friday, 8am-4pm
- Internal networks – Pastoral Support Coordinator – International, academic and service teams
- External networks – youth and family support services, disability support services, health services, Careers NZ, MSD, employers, Iwi

NorthTec  
Learner Support Directorate



## STUDENT SUCCESS TEAM NORTHTEC

**We aim to support students to achieve their educational and career goals. All services are free and confidential.**

- H** Health information and advice – Te Whare Hauora
- E** Emotional/spiritual support – counselling and chaplaincy
- L** Learning support – study skills, academic writing, referral to specialist services, readers and writers
- P** Pastoral and Kaitakawaenga cultural support for personal issues, career advice, financial advice, concerns/complaints






## Artena Support Module Development – NorthTec 2017

### Reasons for further development:

- ✓ Respond to TEC Equity (students with disabilities) reporting requirements 2017
- ✓ Resolve inconsistencies in the use of the module functions and notes fields
- ✓ Improve reporting of Student Success activities
- ✓ Provide appropriate data for self-assessment processes





Support Services    DS DL Close DS/DL   Contact

Summary	Complaints	Counselling	Discipline	Disability	Hardship	Health	Learning	Liaison
---------	------------	-------------	------------	------------	----------	--------	----------	---------

Type	Count	LASTMODIFIED
Disability	1	2017-05-02 10:41:47.740
Hardship	1	2016-05-20 10:40:10.193
Health	1	2017-05-08 15:07:34.703
Learning	20	2017-05-08 15:23:13.317
Liaison	9	2017-05-08 15:07:06.987

## NorthTec Student Success Wish-List:

### Each Tab

- Support Provider (drop-down)
  - Type (drop-down)
  - Action(drop-down)
  - Contract (drop-down)
  - Date (default)
  - Duration (time taken in minutes)
- Notes (open field)